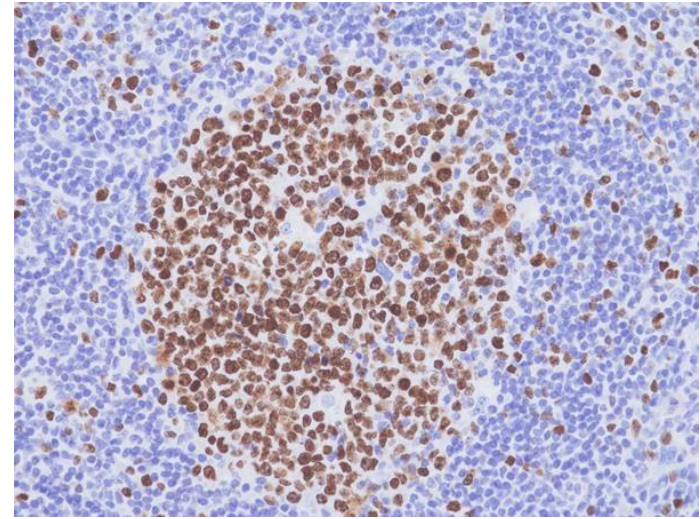
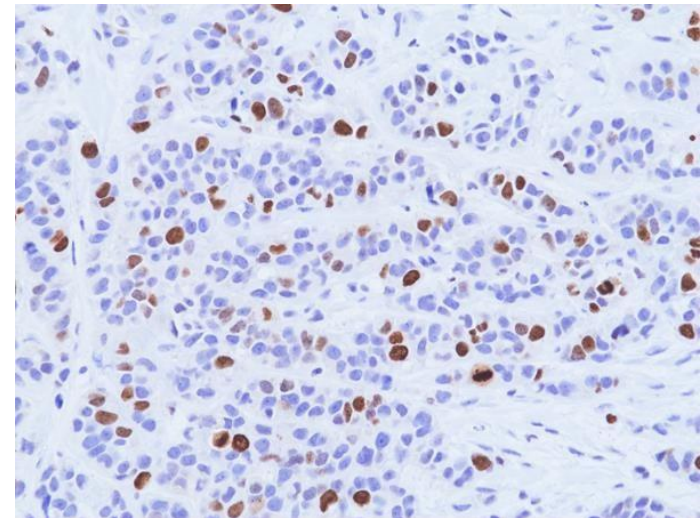


## Specification Sheet

<b>Product:</b>	Rabbit Monoclonal Antibody Anti-Ki-67 Rabbit Monoclonal Antibody, Clone RM521
<b>Catalog No.:</b>	ANT81413
<b>Clone:</b>	RM521
<b>Specificity:</b>	This antibody reacts to Human Antigen Ki-67.
<b>Application:</b>	Immunohistochemistry, Western Blot
<b>Immunogen:</b>	A peptide corresponding to the internal region of human Ki67
<b>Purity:</b>	Protein A affinity purified from an animal origin-free culture supernatant
<b>Size:</b>	100 $\mu$ L
<b>Buffer:</b>	50% Glycerol/PBS with 1% BSA and 0.09% sodium azide
<b>Usage:</b>	IHC: 1:100 - 1:200 dilution WB: 1:200 - 1:1000 dilution
<b>Storage and Stability:</b>	Stable for 1 Year at -20.0°C from date of receipt
<b>Country of Origin:</b>	U.S.A.
<b>Intended Use:</b>	<b>For Research Use Only Not for Diagnostic or Therapeutic Use</b>



Immunohistochemical staining of formalin fixed and paraffin embedded human tonsil tissue sections, using anti-Ki67 rabbit monoclonal antibody (Clone RM521) at 1:100 dilution.



Immunohistochemical staining of formalin fixed and paraffin embedded human breast cancer tissue sections, using anti-Ki67 rabbit monoclonal antibody (Clone RM521) at 1:100 dilution.